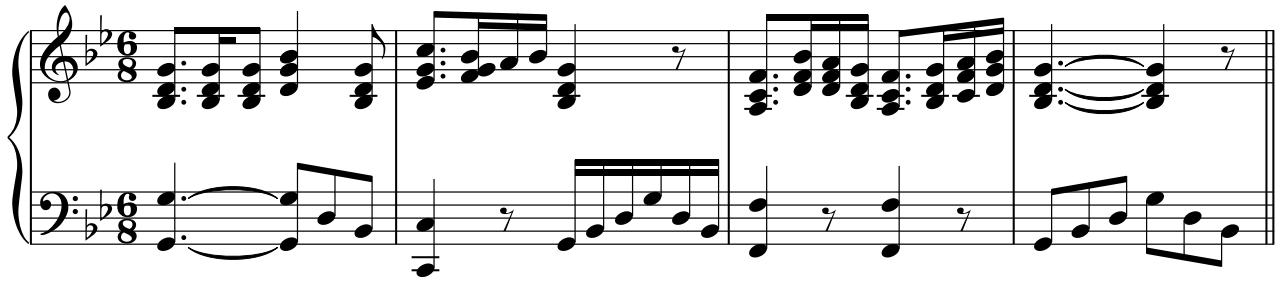


# 고추 잠자리

이서연 작사  
신진수 작곡

♩. = 76



5

어디든 훨 훨 날아다니는 넌 참 — 좋겠다 —

The vocal line continues with a melody of eighth and sixteenth notes. The piano accompaniment consists of chords in the right hand and single notes in the left hand.

9

나 도너 처럼 날수있다면 부모님있는곳 친구있는곳

The vocal line continues with a melody of eighth and sixteenth notes. The piano accompaniment consists of chords in the right hand and single notes in the left hand.

13

Music score for measures 13-16. The vocal line (treble clef) features a melody in B-flat major with lyrics: 언 제 고 다 녀 올 텐 데 — 뜨 거 운 햇 살 을 뚫 고 —. The piano accompaniment (grand staff) consists of chords in the right hand and a simple bass line in the left hand.

17

Music score for measures 17-20. The vocal line (treble clef) features a melody in B-flat major with lyrics: 하 늘 을 나 는 고 추 잠 자 리 나 — 도 너 처 럼 백 두 산 에 갈 꺼. The piano accompaniment (grand staff) consists of chords in the right hand and a simple bass line in the left hand.

21

Music score for measures 21-24. The vocal line (treble clef) features a melody in B-flat major with lyrics: 야 — 나 도 너 처 럼 한 라 산 에 갈 거 야 —. The piano accompaniment (grand staff) consists of chords in the right hand and a simple bass line in the left hand.